

# Oncology Handbook





# WELCOME!

This handbook outlines key information about your journey in the Cancer and Blood Diseases Institute (CBDI).

There are many different types of cancer that all have their own treatments, and individual patients respond differently to different treatments. For this reason, no handbook can replace discussion with your doctor and care team members. Ask them any questions you have.

You can find more information at:  
[cincinnatichildrens.org/oncologyhandbook](http://cincinnatichildrens.org/oncologyhandbook)

Sincerely,  
**The CBDI Team**



# Table of Contents

## **When to Call 513-517-CBDI (2234) ..... 2**

*Call Right Away if...*

*Call Within 24 Hours if...*

## **How to Take a Temperature ..... 4**

*Taking Temperature by Mouth*

*Taking Temperature Under the Armpit*

## **Understanding Blood Counts ..... 8**

*Hemoglobin (HBG)*

*Platelets*

*Absolute Neutrophil Count (ANC)*

## **Meet the Team ..... 14**

*Primary Oncologist*

*Fellow*

*Nurse Practitioner*

*Nurse Care Manager*

*Social Worker*

*Palliative Care Team*

*Fertility Team*

*Psychologists*

## **Oncology Care Units ..... 20**

*Burnet Campus*

- *Adolescent & Young Adult (AYA) Outpatient Clinic*
- *Clinic Procedure Room*
- *Day Hospital*
- *Inpatient Unit*

*Liberty Campus*

- *Outpatient Clinic*
- *Inpatient Unit*
- *Proton Therapy Center*

# When to Call

**513-517-CBD1 (2234)**

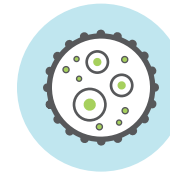


## Call right away if...

you have any of these symptoms:



Temperature of  
100.4°F (38°C) or higher



Signs of infection



Unexpected or  
excessive vomiting



Changes in eating  
and drinking



Changes or painful  
bowel movements



Vomiting after receiving  
anti-nausea medicine



Bleeding



Swollen and painful  
stomach



Changes in urine  
frequency or color

---

## Call within 24 hours if...

you have contact with anyone who is newly diagnosed with chickenpox or shingles.

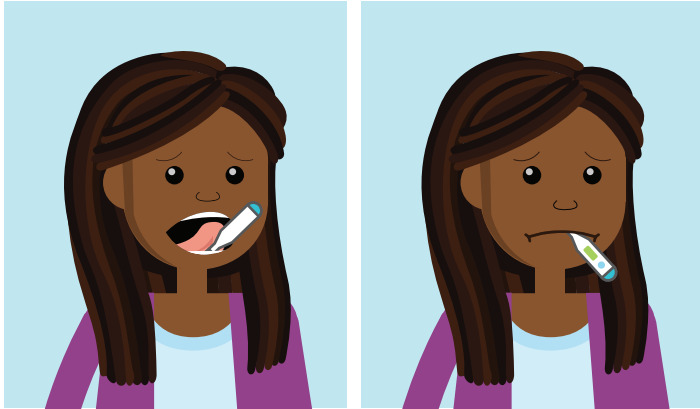
# How to Take a Temperature



A temperature should be checked any time you do not feel well.

The temperature should not be checked rectally.

## Taking Temperature by Mouth



1

2

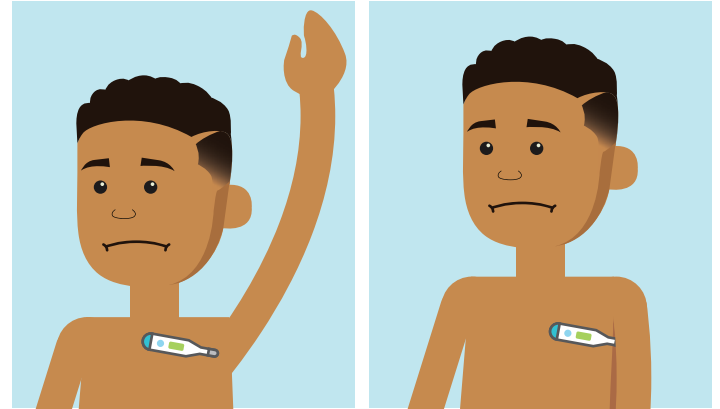
1

Place the thermometer under the tongue.

2

Close lips fully until thermometer beeps.

## Taking Temperature Under Armpit



1

2

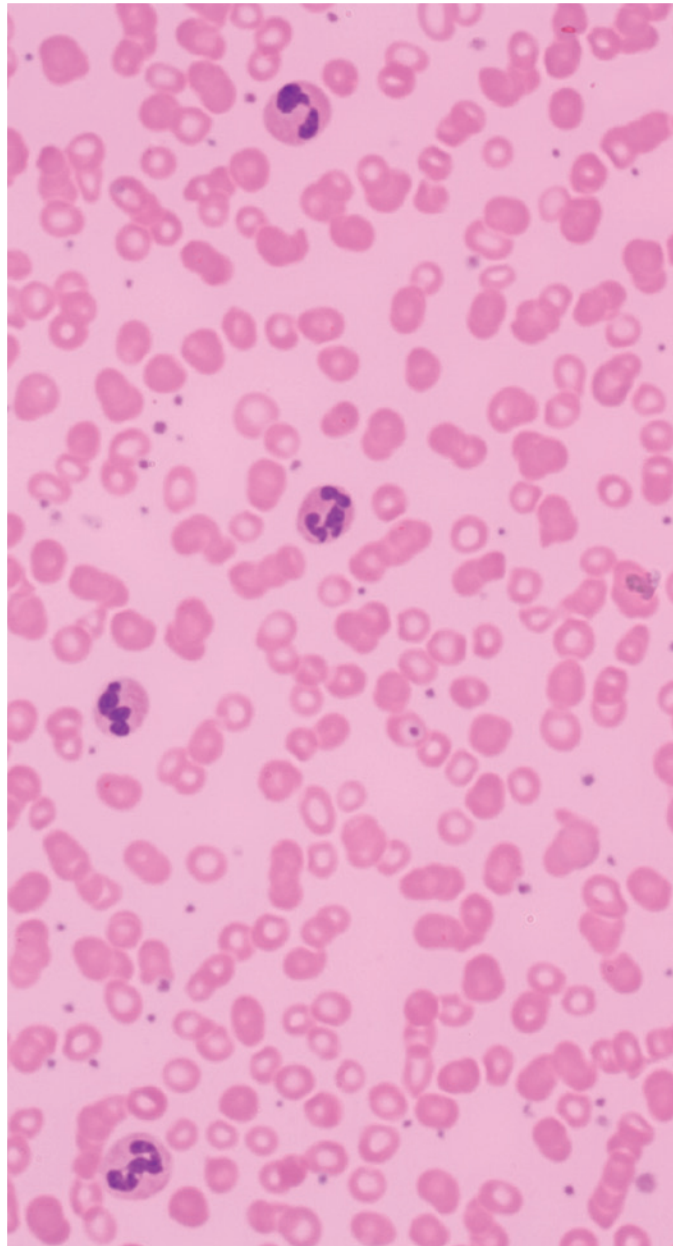
1

Place the thermometer under the armpit and lower the arm to the side.

2

Hold the arm close to the body to assure that the thermometer remains in the armpit until thermometer beeps.

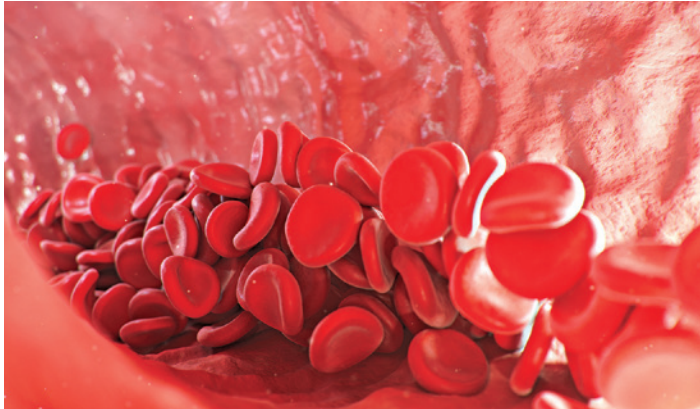
# Understanding Blood Counts





Blood is made in the bone marrow, a soft spongy tissue within our bones, and carries oxygen and nourishment throughout the body. Blood is made up of red blood cells, white blood cells, platelets and clotting factors, as well as a liquid called plasma.

Individuals who receive chemotherapy or whose disease affects the bone marrow may have many changes in blood counts. Throughout treatment, we will check your blood counts often.

## Hemoglobin (HBG)

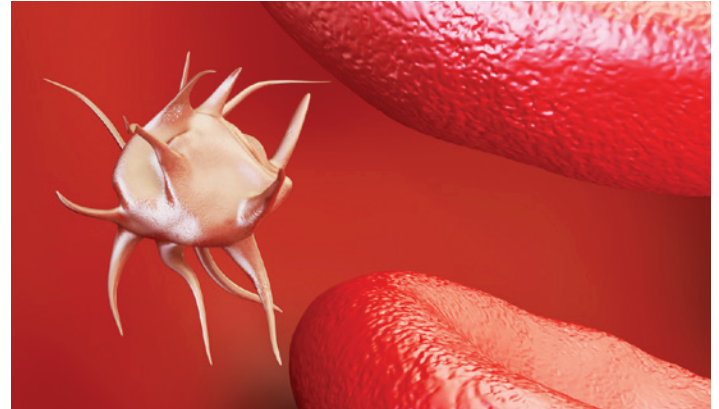


**Hemoglobin (HGB)** is a protein within red blood cells that carries oxygen to provide energy to the body.

|   |   |
|---|---|
|   | <b>7 – 12</b><br>(low but okay)         |
|  | <b>Less than 7</b><br>(needs attention) |

**Signs of low count include:** *Paleness, fatigue, heart palpitations, shortness of breath, headaches.*

## Platelets



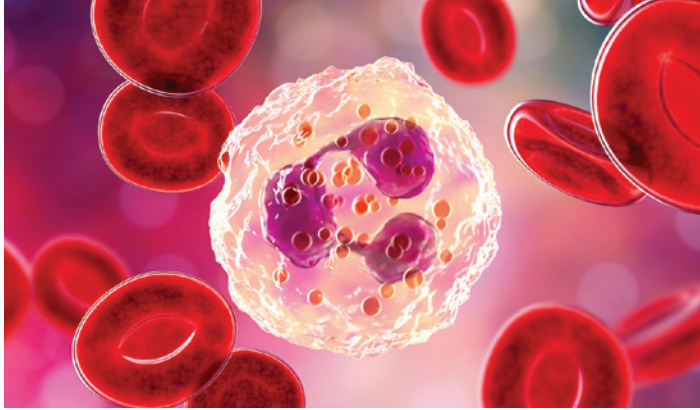
A **platelet** is the smallest blood cell in the human body that makes clots to help stop bleeding if a blood vessel is cut or injured.

|  |   |
|--|---|
|   | <b>50,000 – 100,000</b><br>(low but okay)   |
|  | <b>10,000 – 50,000</b><br>(needs attention) |

**Signs of low count include:** *Bruising, bleeding.*



## Absolute Neutrophil Count (ANC)



**Absolute Neutrophil Count (ANC)** is the total number of neutrophils you have to fight a bacterial or fungal infection.

|   |   |
|---|---|
|   | <b>500 – 1,000</b><br>(low but okay)      |
|  | <b>Less than 500</b><br>(needs attention) |



## Notes

---

---

---

---

---

---

---

---

---

---

---

---

---

---

---

---

---

---

---

---

---

---

---

---

---

---

---

---

---

---

# Meet the Team

A multidisciplinary group of healthcare professionals will support you throughout your journey.





## Primary Oncologist

---

The primary oncologist is the physician who will direct and oversee care throughout your entire treatment, both inpatient and outpatient.



## Nurse Practitioner

---

The nurse practitioner is a registered nurse with an advanced degree. They work with your primary oncologist to coordinate your care.



## Fellow

---

The fellow is a licensed pediatrician who has chosen to further specialize in pediatric oncology. They work with your primary oncologist to coordinate your care.



## Nurse Care Manager

---

The nurse care manager coordinates your care plan and can help you better understand the overall process and the specifics of your plan.



## Social Worker

---

The social worker provides emotional support and connects you with resources.



## Fertility Team

---

The fertility team assesses the risk to fertility based on your underlying condition or treatment you will receive and makes appropriate recommendations.



## Palliative Care Team

---

The palliative care team seeks to improve quality of life for both you and your family. They focus on providing patients with relief from distressing symptoms, pain and the stressors of a serious diagnosis. Palliative care works with your oncology team to provide an extra layer of support.



## Psychologists

---

Licensed psychologists are fully integrated into the medical teams and see all new patients. They provide evidence-driven therapies to support patients and families within the medical setting.

# Oncology Care Units

You will make many visits to the Cancer and Blood Diseases Institute to complete treatment.

Your visits may be scheduled at either Burnet Campus or Liberty Campus. Our physicians, nurse practitioners, and other staff work at both locations so you will receive consistently great care and see familiar faces wherever you schedule your appointment.



# Burnet Campus



## Burnet Adolescent & Young Adult (AYA) Outpatient Clinic



### Where is the Outpatient Clinic located?

The Cancer and Blood Diseases Institute AYA Outpatient Clinic is located on the first floor of the A building.

### When are appointments available?

Appointments are available Monday through Friday from 7:30 am until 4:30 pm. You can make an appointment by calling 513-517-CBDI (2234).

## Burnet Clinic Procedure Room



### When are appointments available?

Certain procedures requiring general anesthesia are performed in the Cancer and Blood Disease Institute Outpatient Clinic Monday through Friday.

### What types of procedures are performed here?

These procedures may include lumbar punctures, bone marrow aspirates and bone marrow biopsies. The evening before a scheduled procedure a nurse from clinic will call you to review your current health status, verify the procedure, medications, scheduled appointment time and discuss the time at which you may have nothing further to eat or drink before the scheduled procedure.

## Burnet Day Hospital



### Where is the Day Hospital located?

Day Hospital is part of the Outpatient Clinic and is located on the 5th floor of the A building.

### What is the Day Hospital?

At times, you may need medications or treatments that take longer than two hours to receive. In this case, we will schedule an appointment in the Day Hospital. This may include infusions of blood, intravenous fluids, medications or chemotherapy. Because of the longer appointment times, the patient rooms in Day Hospital have hospital beds, chairs and televisions to make the visit more comfortable.

## Burnet Inpatient Unit



### Where is the Inpatient Unit located?

At different times during your therapy, you may be admitted to the Inpatient Unit. The Inpatient Units are located on the 5th floor of the A building.

### Who's admitted to the Inpatient Unit?

Most of the admissions are scheduled when patients need chemotherapy that requires close monitoring. At other times, you may be admitted because you need to get medications to recover from an illness or to prevent further complications.

### Are the inpatient rooms private?

All of the rooms on the Inpatient Unit are private.



# Burnet Inpatient Unit... *Continued*

### **Who can visit my inpatient room?**

Parents and spouses may stay in the patient room 24-hours a day. All other guests may visit between the hours of 8:30 am and 8:30 pm.

During flu season, younger children may be restricted from visiting. When children visit the hospital, we will take their temperature and screen them for signs of illness.

### **What are healthcare rounds?**

Every morning a team of doctors, nurses, pharmacists, dietitians and social workers perform healthcare rounds. Families and patients are encouraged to take part in daily morning rounds. This is a great opportunity to ask the team any questions you might have. Doctors and nurses are available 24-hours a day to answer any questions or concerns.



## Notes

---

---

---

---

---

---

---

---

---

---

---

---

---

---

---

---

---

---

---

---

---

---

---

# Liberty Campus



## Liberty Outpatient Clinic



### Where is the Liberty Outpatient Clinic located?

The Liberty Outpatient Clinic is located on the Cincinnati Children's Liberty Campus in Liberty Township, Ohio. The clinic is located on the 2nd floor of Location B above the Proton Therapy Center.

### When are appointments available?

Appointments are available Monday through Friday from 8 am to 5 pm. You can make an appointment by calling 513-517-CBDI (2234).

### Is it the same staff as Burnet Campus?

The Liberty Outpatient Clinic is staffed by the same doctors and nurses as the Burnet Campus.

## Liberty Inpatient Unit



### Where is the Liberty Inpatient Unit located?

The Liberty Inpatient Unit is located on the Cincinnati Children's Liberty Campus in Liberty Township, Ohio. The unit is located on the 4th floor of Location A.

### Who is admitted to the Inpatient Unit?

You may be admitted to the Inpatient Unit because you need to get medications to recover from an illness or to prevent further complications. Talk to your care team to determine if the Liberty Inpatient Unit is right for you.

### Is it the same staff as Burnet Campus?

The Liberty Inpatient Unit is staffed by the same doctors and nurses as the Burnet Campus.

## Proton Therapy Center

---



### **Where is the Proton Therapy Center located?**

The Proton Therapy Center is located at Cincinnati Children's Liberty Campus in Liberty Township, Ohio. The center is on the first floor of Location B.

### **What is Proton therapy?**

Proton therapy uses protons to treat pediatric and adult tumors. It has the advantage of greater precision, because it attacks the tumor but avoids healthy tissues and organs nearby.

### **When are appointments available?**

Appointments are available Monday through Friday from 7 am to 4:30 pm. You can ask your care team to help you make an appointment or call 513-636-2866 (ATOM).

# Cancer and Blood Diseases Institute



513-517-CBDI (2234)



[cincinnatichildrens.org](http://cincinnatichildrens.org)

KN 1076, 1/2021

BRV417807 0421 000150