



Lactation Seminar Series

2024-2025

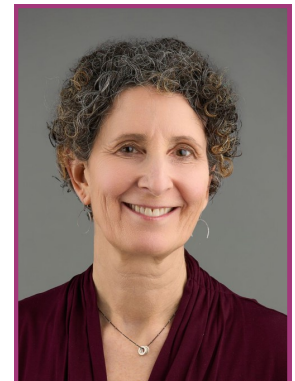
Scaling Up Efforts to Regulate Commercial Milk Formula Marketing to Improve Maternal Child Health & Health Equity

Cecília Tomori, PhD, MA, BA
Thursday, December 12, 2024
3:00pm-4:30pm EST
Online via Zoom



A Tour of Breast Pumps

Anne R. Eglash, MD, NABBLM-C, IBCLC
Wednesday, February 5, 2025
3:00pm-4:30pm EST
Online via Zoom



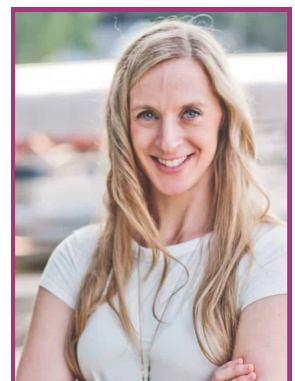
New Rights for Lactating Workers

Jessica Lee, JD
Thursday, March 6, 2025
3:00pm-4:30pm EST
Online via Zoom



Milk Bioactive Components: Medicine or Myth?

Bridget Young, PhD
Thursday, March 13, 2025
3:00pm-4:30pm EST
Online via Zoom



Registration is FREE and required for this series



Lactation Seminar Series

2024-2025

“Scaling Up Efforts to Regulate Commercial Milk Formula Marketing to Improve Maternal Child Health & Health Equity”

Cecília Tomori, PhD, MA, BA

Director of Global Public Health & Community Health,
Johns Hopkins University School of Nursing

Thursday, December 12, 2024

3:00pm-4:30pm EST

Online via Zoom

Register in advance for this meeting:

<https://us02web.zoom.us/meeting/register/tZEude-trzloHtYqzgsrFQVuUllfRaOvumbS>

After registering, you will receive a confirmation email containing information about joining the meeting.



In support of improving patient care, this activity has been planned and implemented by Cincinnati Children's and Cleveland Clinic. Cincinnati Children's is jointly accredited by the Accreditation Council for Continuing Medical Education (ACCME), the Accreditation Council for Pharmacy Education (ACPE), and the American Nurses Credentialing Center (ANCC), to provide continuing education for the healthcare team. Cincinnati Children's designates this live education for a maximum of 1.50 *AMA PRA Category 1 Credit (s)*[™]. Physicians should claim only the credit commensurate with the extent of their participation in the activity.

Approved from the IBCLE for 1.50 -L CERPs



Lactation Seminar Series

2024-2025

“New Rights for Lactating Workers”

Jessica Lee, JD

University of Virginia School of Law

Thursday, March 6, 2025

3:00pm-4:30pm EST

Online via Zoom

Register in advance for this meeting:

<https://us02web.zoom.us/join/zoom/register/tZEude-trzloHtYqzgsrFQVuUllfRaOvumbS>

After registering, you will receive a confirmation email containing information about joining the meeting.



In support of improving patient care, this activity has been planned and implemented by Cincinnati Children's and Cleveland Clinic. Cincinnati Children's is jointly accredited by the Accreditation Council for Continuing Medical Education (ACCME), the Accreditation Council for Pharmacy Education (ACPE), and the American Nurses Credentialing Center (ANCC), to provide continuing education for the healthcare team. Cincinnati Children's designates this live education for a maximum of 1.50 *AMA PRA Category 1 Credit (s)*[™]. Physicians should claim only the credit commensurate with the extent of their participation in the activity.

Approved from the IBCLE for 1.50 -L CERPs



Lactation Seminar Series

2024-2025

“Milk Bioactive Components: Medicine or Myth?”

Bridget Young, PhD

Director of Research for Breastfeeding & Lactation Medicine
University of Rochester School of Medicine & Dentistry

Thursday, March 13, 2025

3:00pm-4:30pm EST

Online via Zoom

Register in advance for this meeting:

<https://us02web.zoom.us/join/register/tZEude-trzloHtYqzgsrFQVuUllfRaOvumbS>

After registering, you will receive a confirmation email containing information about joining the meeting.



In support of improving patient care, this activity has been planned and implemented by Cincinnati Children's and Cleveland Clinic. Cincinnati Children's is jointly accredited by the Accreditation Council for Continuing Medical Education (ACCME), the Accreditation Council for Pharmacy Education (ACPE), and the American Nurses Credentialing Center (ANCC), to provide continuing education for the healthcare team. Cincinnati Children's designates this live education for a maximum of 1.50 *AMA PRA Category 1 Credit (s)*[™]. Physicians should claim only the credit commensurate with the extent of their participation in the activity.

Approved from the IBCLE for 1.50 -L CERPs