

# New State-of-the-Art Technology for Cytometry

Overview of RFCC Services

Wednesday, December 14, 2022



# Overview

- General Services Offered (Thornton)
- State-of-the-Art Services
  - Single Cell Proteomics (Sproles)
  - Imaging Cytometry (Crosswell)
  - High Parameter Cytometry - Analysis and Sorting (Quayle)
  - High Dimensional Data Analysis (Lages)
- Reminders

# General Services

- Analytical Cytometers
- Cell Sorters
- Luminex

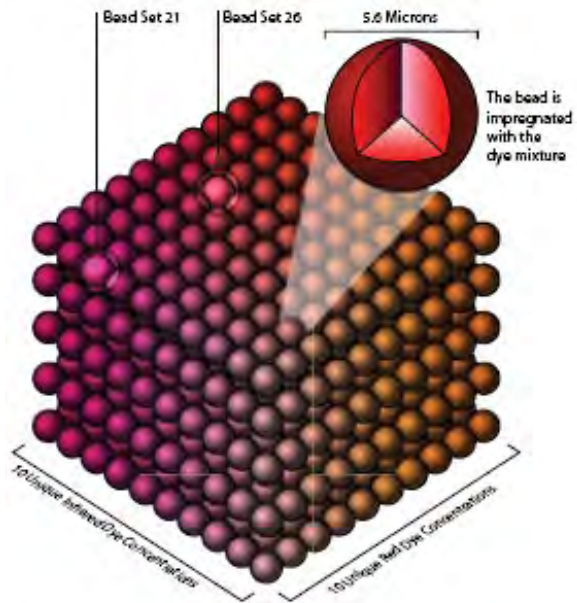
# Analytical Cytometers

Instrument Name	Instrument Make/Model	Location	Number of Fluorescence PMTs				
			Blue (488nm)	Red (640nm)	Violet (405nm)	Yellow-Green (561nm)	UV (355nm)
<a href="#"><u>Canto 1</u></a>	BD FACSCanto	R5087A	2	3		4	
<a href="#"><u>Canto 2</u></a>	BD FACSCanto II	R5526	4	2	2		
<a href="#"><u>Canto 3</u></a>	BD FACSCanto	R5087A	5	3	3		
<a href="#"><u>LSR II</u></a>	BD LSR II	R5524	2	3	6	5	2
<a href="#"><u>Fortessa 1</u></a>	BD LSRFortessa	R5524	2	3	6	5	2
<a href="#"><u>Fortessa 2</u></a>	BD LSRFortessa	R5543	2	3	6	5	2
<a href="#"><u>Fortessa 3</u></a>	BD LSRFortessa	R5524	2	3	6	5	2
<a href="#"><u>Aurora</u></a>	Cytek	R5509	14	8	16	10	16
<a href="#"><u>Maleficent</u></a>	Cytek	R5509	14	8	16	10	16

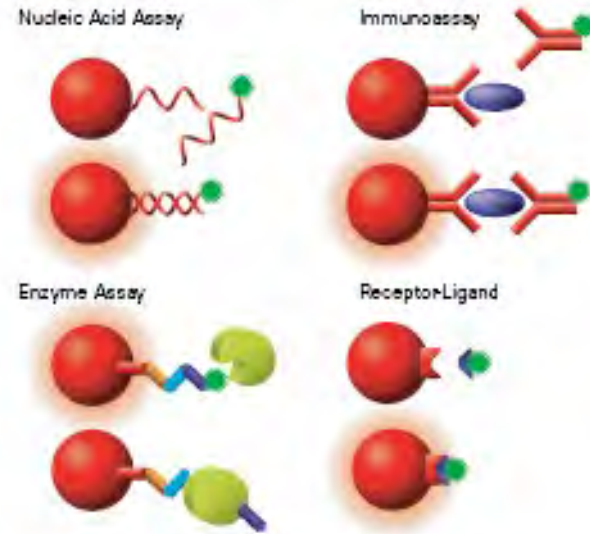
# Cell Sorters

Instrument Name	Instrument Make/Model	Location	Number of Fluorescence PMTs					Number of cell population	
			Blue (488nm)	Red (635nm)	Violet (405nm)	Yellow-Green (561nm)	UV (335nm)		
<a href="#"><u>Fusion</u></a>	BD FACSAria Fusion	R5503	2	3	6	5	2	4	
<a href="#"><u>Arnie</u></a>	BD FACSAria II	R5503	2	3	6	5	2	4	
<a href="#"><u>S6</u></a>	BD FACSymphony	R5503	6	3	8	5	8	6	
<a href="#"><u>Bigfoot</u></a>	ThermoFisher	R5529	7	5	8	12	12	6	
<a href="#"><u>SH800S</u></a>	Sony SH800S	R5504	4 collinear lasers, 6 Channels						2
<a href="#"><u>MA900</u></a>	Sony MA900	R5504	4 lasers, 2 colinear spots, 12 Channels						4

# Luminex



Luminex internally color-codes microspheres with precise concentrations of various fluorescent dyes yielding up to 500 distinctly colored bead sets.



The microspheres can be coupled with reagents specific to a particular bioassay such as antigens, antibodies, oligonucleotides, enzyme substrates, or receptors.

Instrument	Room	BSL	Hours
Bio-Plex	R5543	BSL2	Monday-Friday 9am-5pm



- 25 ul sample
- Up to 100 analytes/sample

For more information contact Alyssa Sproles at 636-3575 or [Alyssa.Sproles@cchmc.org](mailto:Alyssa.Sproles@cchmc.org).

# State-of-the-Art Services

- Single Cell Proteomic
- Imaging Cytometry
- High Parameter Cytometry
- High Dimensional Data Analysis

# Single Cell Proteomics (IsoLight)

- Automated single-cell or population chip ELISA reader.
- Functional immune profiling, intracellular signaling or high-plex immunoassays (up to 32) from single cell suspension (30ul) or serum/plasma (5.5ul).

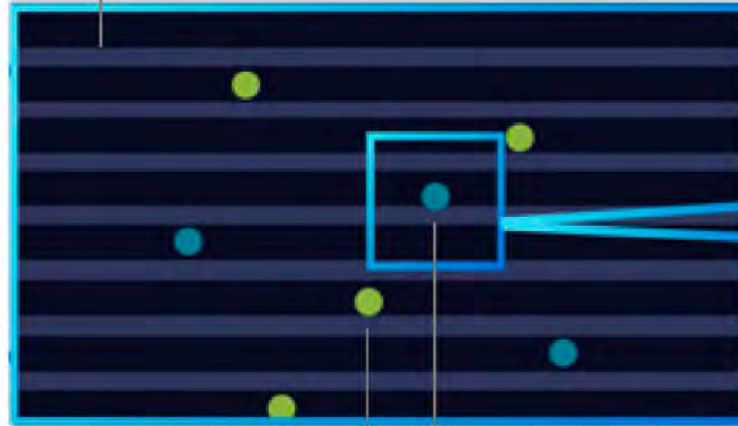




# IsoCode's Proteomic Barcoding Principles: Single-Cell



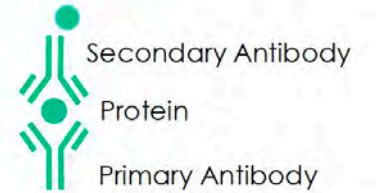
Single cell Microchambers: 12,000



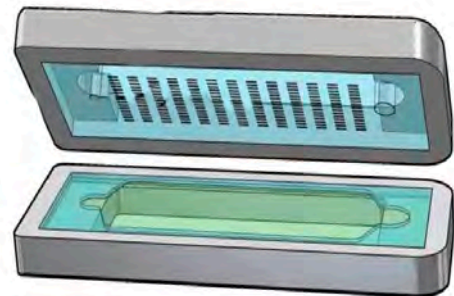
Cell Surface Fluorescence

Barcoded Chamber

Sandwich ELISA, per Lane



Multiplexed ELISA Cytokine capture



Per cell, each chamber

32+ Plex Cytokines



# IsoCode Chip Family: Single-Cell Functional Secretomics



## Single-Cell Adaptive Immune

Granzyme B, IFN- $\gamma$ , MIP-1 $\alpha$ , Perforin, TNF- $\alpha$ , TNF- $\beta$   
GM-CSF, IL-2, IL-5, IL-7, IL-8, IL-9, IL-12, IL-15, IL-21  
CCL11, IP-10, MIP-1 $\beta$ , RANTES  
IL-4, IL-10, IL-13, IL-22, TGF $\beta$ 1, sCD137, sCD40L  
IL-1 $\beta$ , IL-6, IL-17A, IL-17F, MCP-1, MCP-4

**Adaptive:**  
T-Cells

## Applications:

Predictive Pre-clinical Potency  
Pre-clinical Persistence Modeling  
Protective Immune Monitoring  
Patient Stratification  
New Functional T-cell types



## Single-Cell Innate Immune

IFN- $\gamma$ , MIP-1 $\alpha$ , TNF- $\alpha$ , TNF- $\beta$   
GM-CSF, IL-8, IL-9, IL-15, IL-18, TGF- $\alpha$ , IL-5, IL-15  
CCL11, IP-10, MIP-1 $\beta$ , RANTES, BCA-1  
IL-10, IL-13, IL-22, IL-22, sCD40L  
IL-1 $\beta$ , IL-6, IL-12-p40, IL-12, IL-17A, IL-17F, MCP-1, MCP-4,  
MIF, EGF, PDGF-BB, VEGF

**Innate:**  
NK Cells  
Monocytes  
Macrophages  
Fibroblast  
Myeloid Cells

## Applications:

Pre-clinical myeloid impact  
Prognostic Immune Suppression  
Early responder function  
Predictive Neuroinflammation  
New Innate Functional cell types



## Single-Cell Inflammation

GM-CSF, IFN- $\gamma$ , IL-2, IL-12, TNF- $\alpha$ , TNF- $\beta$   
IL-4, IL-5, IL-7, IL-9, IL-13  
CCL11, IL-8, IP-10, MCP-1, MCP-4, MIP-1 $\alpha$ , MIP-1 $\beta$ , RANTES  
IL-10, IL-15, IL-22, TGF- $\beta$ 1  
IL-1 $\beta$ , IL-6, IL-17A, IL-17F, IL-21  
Granzyme B, Perforin, sCD40L, sCD137

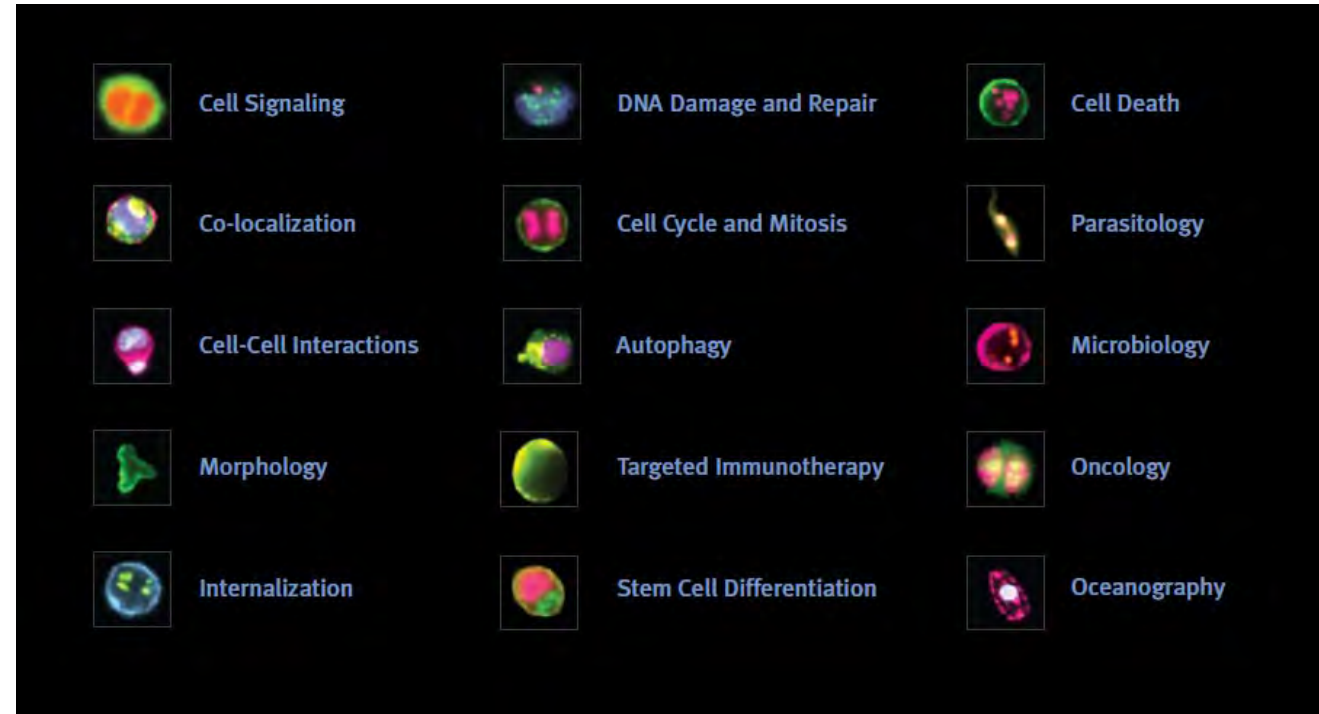
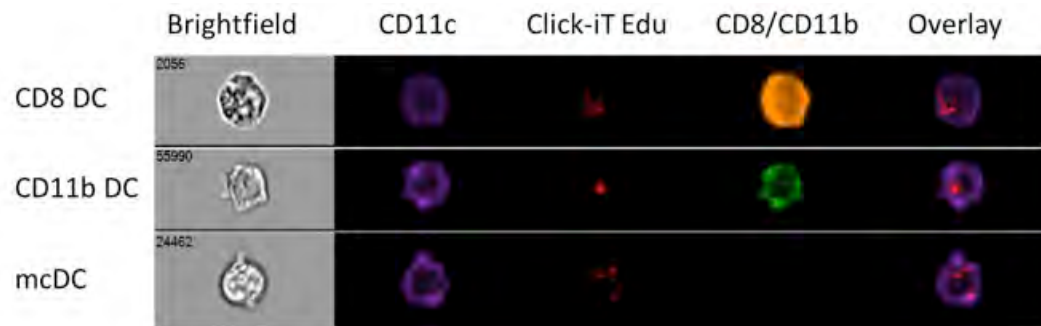
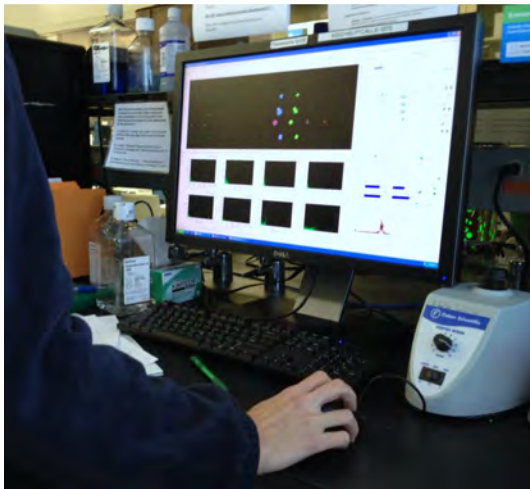
**Adaptive:**  
T-Cells

## Applications:

Pre-clinical Immune Suppression  
Prognostic Autoimmune reaction

# Imaging Cytometry



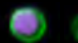
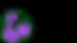


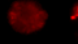
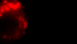

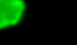
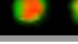

- Concept and applications



# Imaging Cytometry

- New capabilities: High Gain Mode for small dim particles like EVs and viruses.
- Updated software: Machine Learning module.

## Images

Size	 	<i>Small area / Large area</i>
Shape	 	<i>Round nuclei / Lobed nuclei</i>
Location	 	<i>Overlapping probes / Separated probes</i>
Texture	 	<i>Diffuse texture / Spotty texture</i>
Signal	 	<i>Dim / Bright</i>
Comparison	 	<i>Anti-correlated images / Similar images</i>



## Select Images

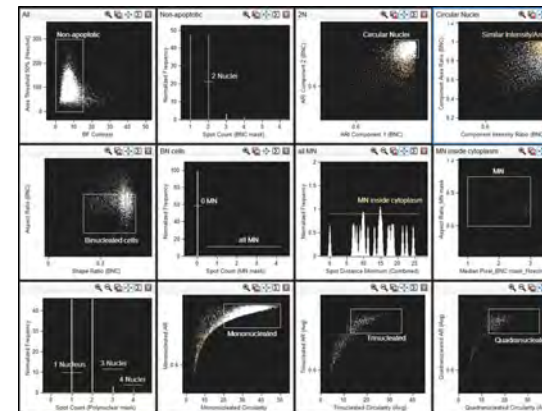
Define Truth Populations

Single Cells

Doublents

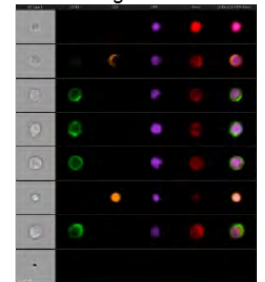


## Data

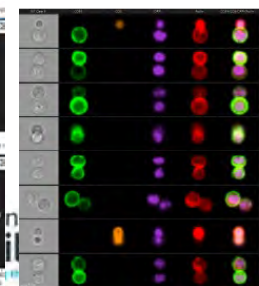


Validate and retrain (if necessary)

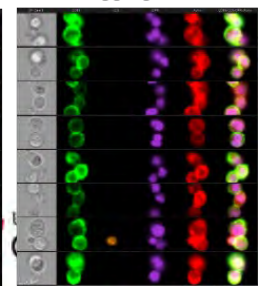
Single Cells



Doublents



Aggregates



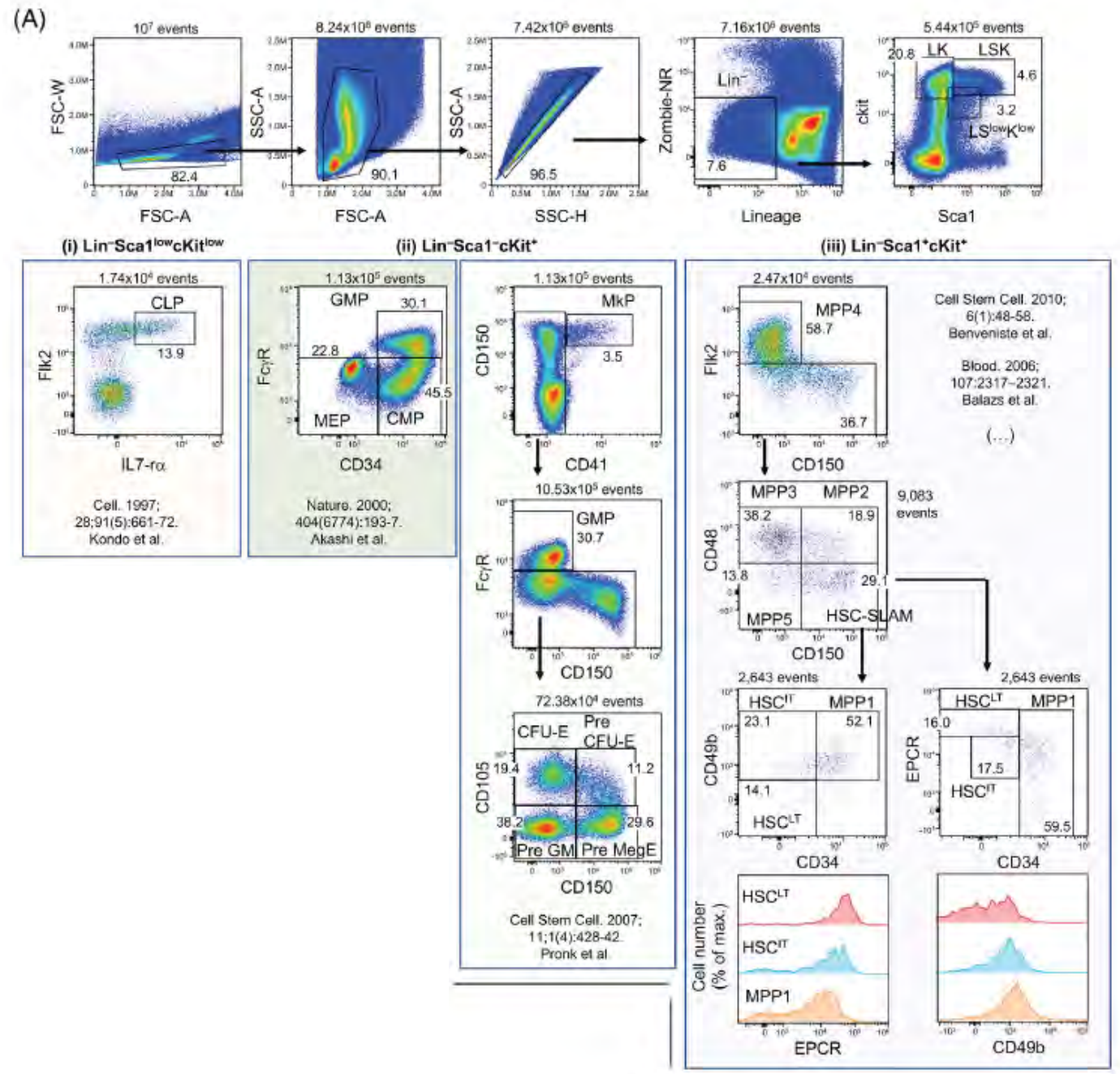
# High Parameter Cytometry - Analysis and Sorting

- Analytical Cytometer
  - Spectral (Aurora)
- Sorters
  - Conventional (S6)
  - Conventional or Spectral (Bigfoot)

# Aurora

## Phenotypic Analysis of the Mouse Hematopoietic Hierarchy Using Spectral Cytometry: From Stem Cell Subsets to Early Progenitor Compartments

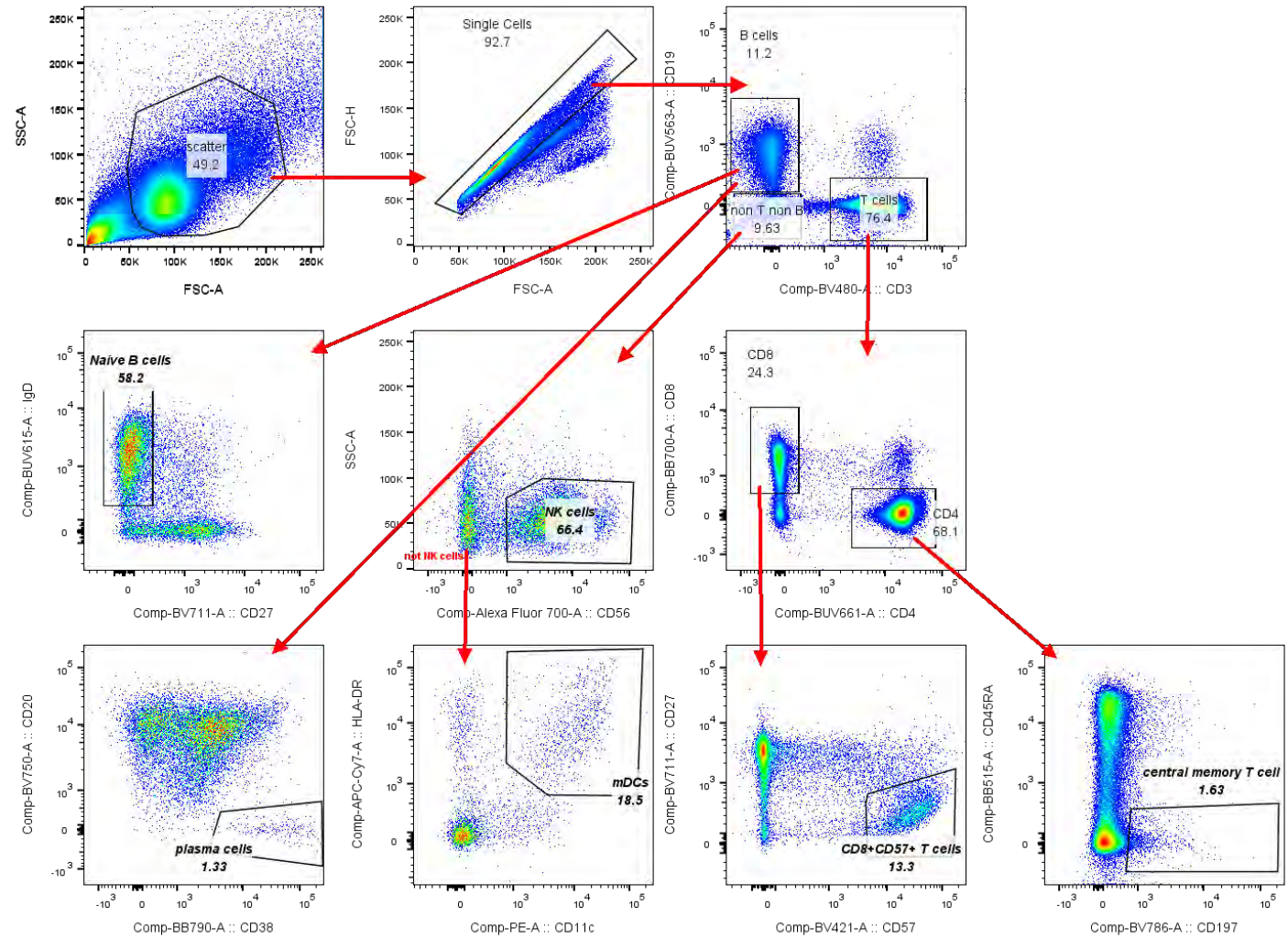
Michael Solomon, Monica DeLay, Damien Reynaud  
Cytometry Part A 97A: 1057–1065, 2020



# S6

## 25 color human PBMC immunophenotyping panel

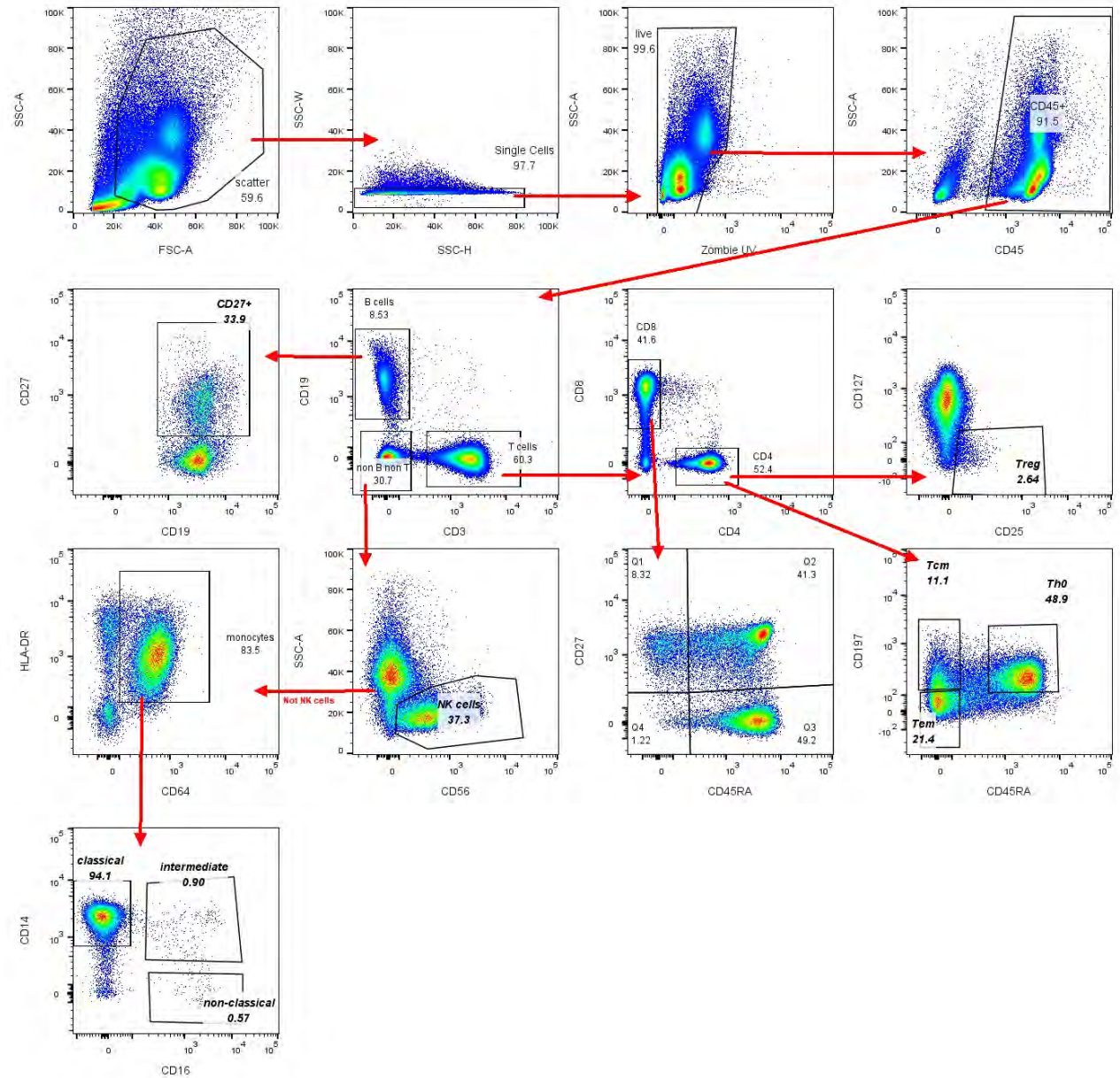
Supplied by BD and acquired by RFCC in December 2022



# Bigfoot

16 color human PMBC immunophenotyping panel

Acquired by RFCC in May 2022





# High Dimensional Data Analysis

- When to use higher dimensional analysis?
- Software for analysis (FlowJo, FCSExpress, Cytobank, OMIQ, Astrolabe, R)
- Resources:
  - Weber et al., Cyto Part A, 2016
  - Nowicka et al., F1000Res, 2017
- New service for high dimensional data analysis.
- New user group for high dimensional data analysis and experimental design (3<sup>rd</sup> Wednesday, 9-10 AM, S6.125).

# Reminders

- New basic FlowJo training
- Other Instruments:
  - Cell Dissociator
  - Cell Counter
  - Plate Reader
- Training/Consultation
- Assistance for Panel Design (Conventional/Spectral)
- Assistance on Instruments (Analyzers/Sorters)
- Billing (ImageStream)