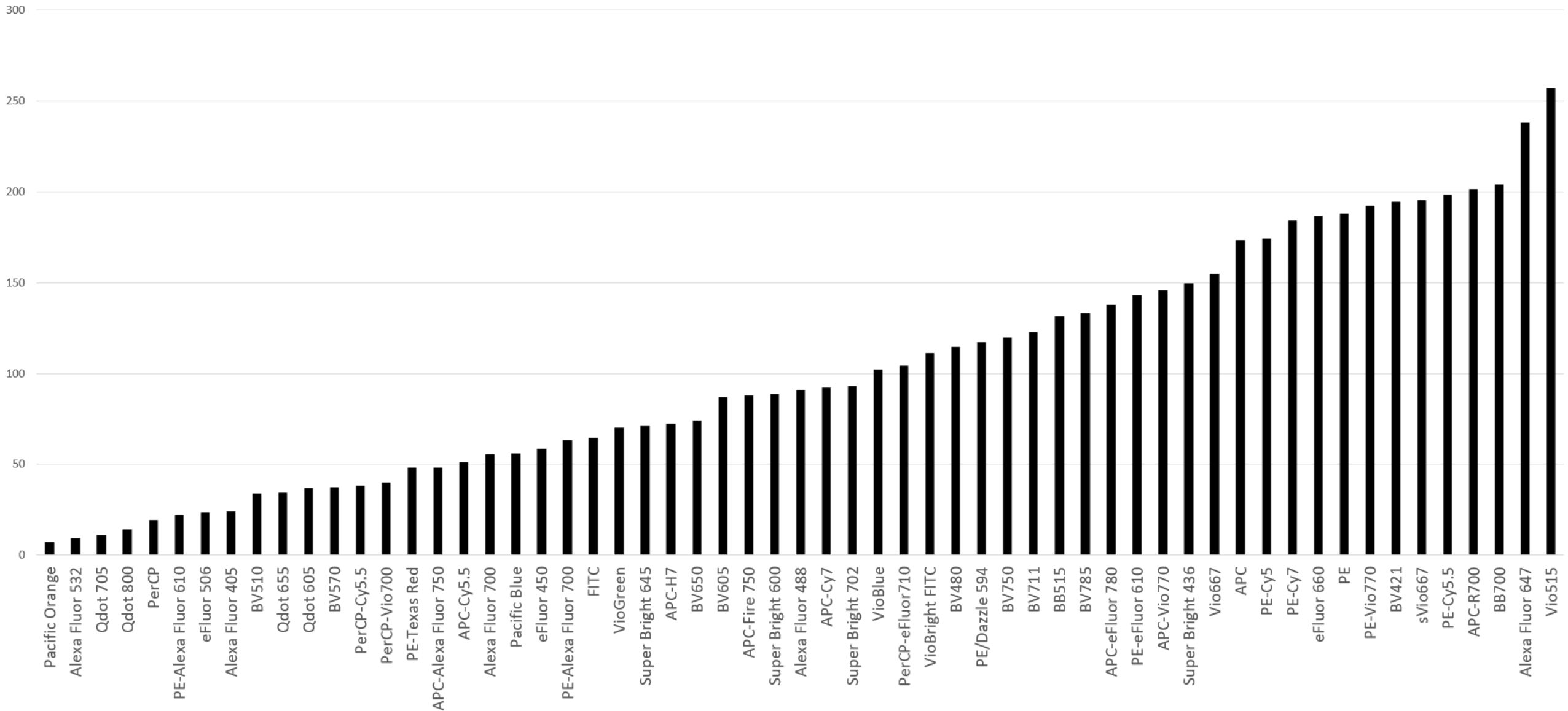


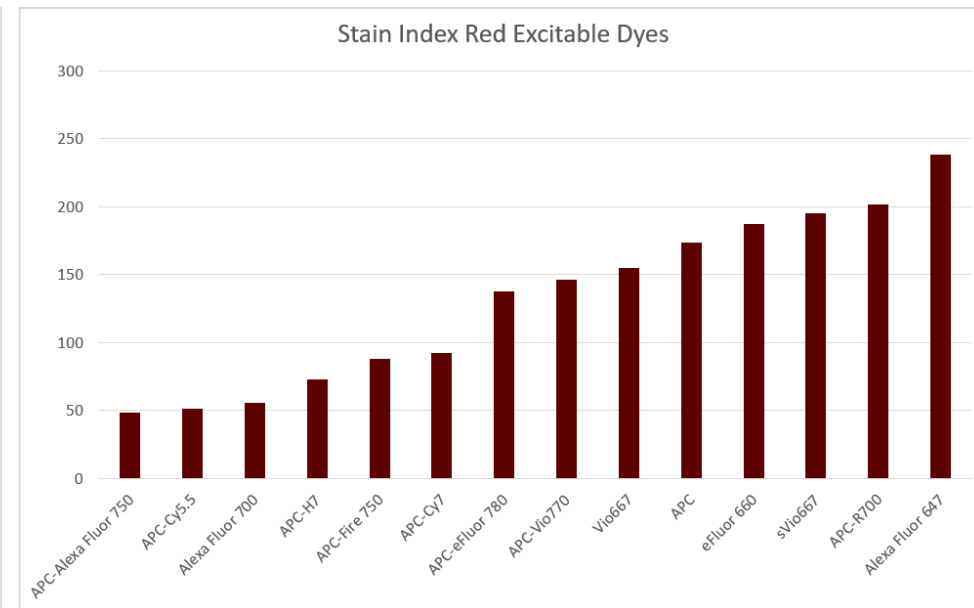
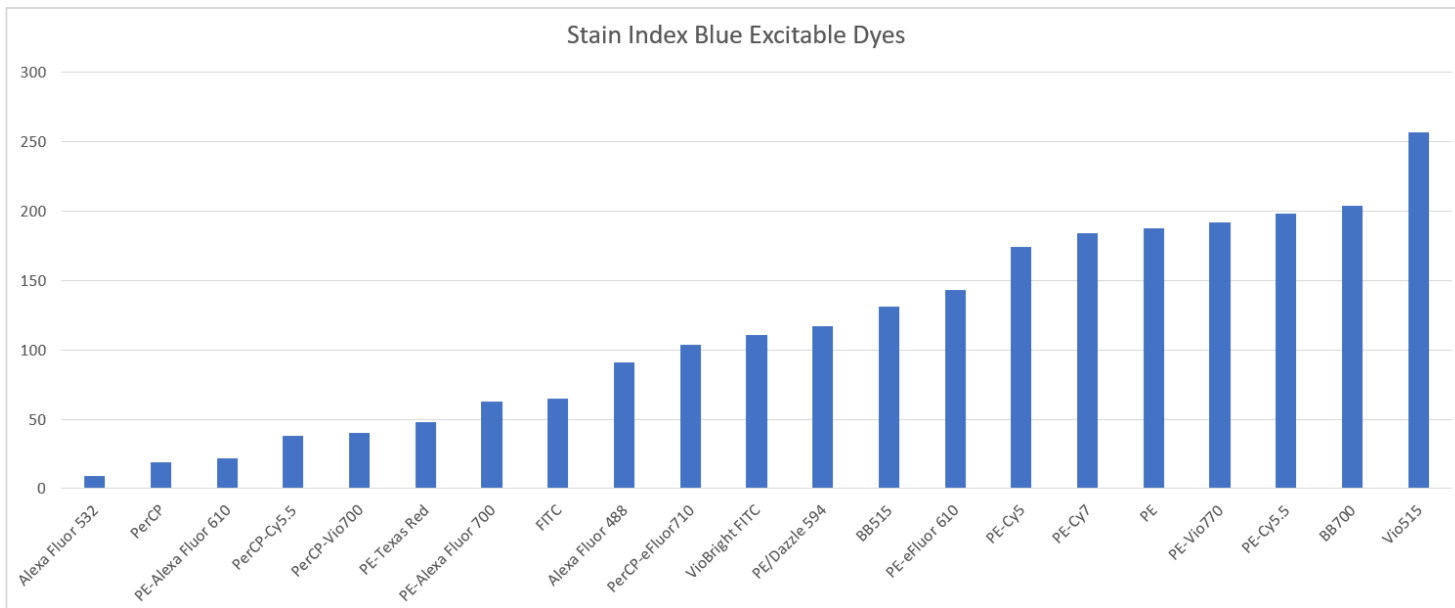
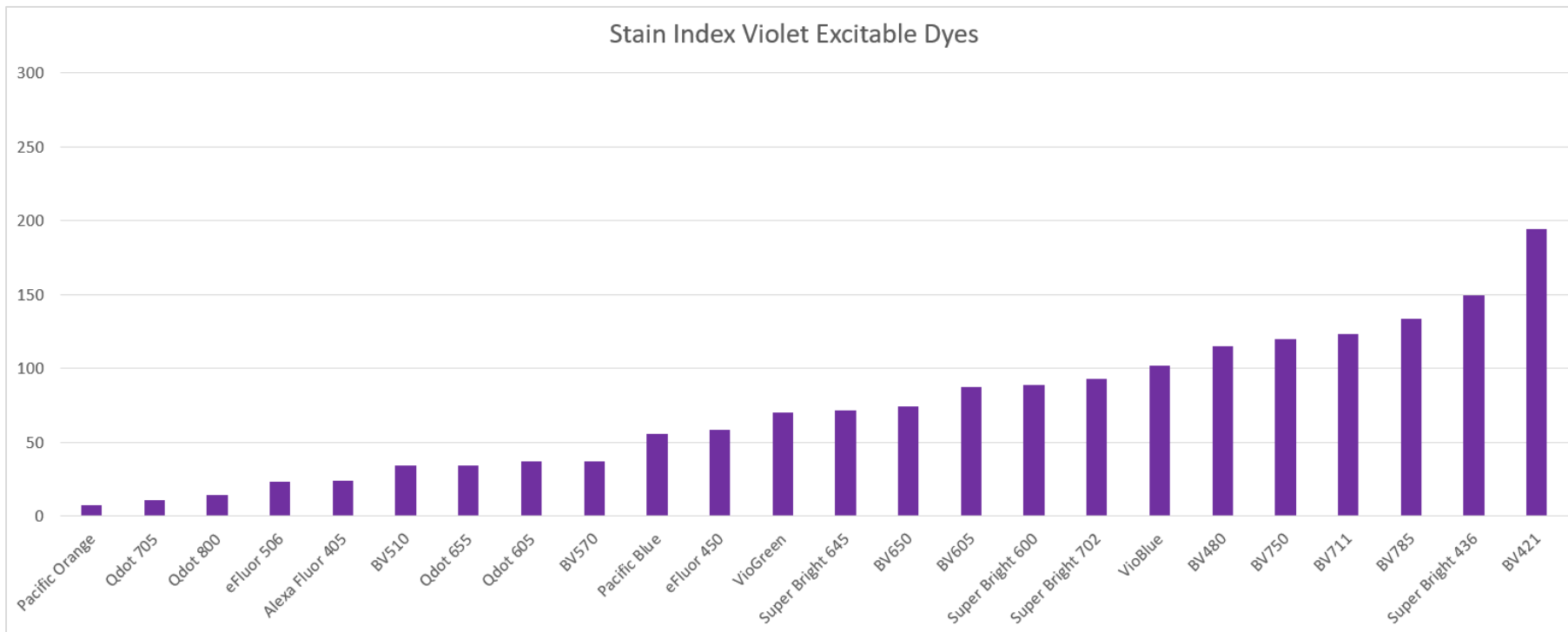


CYTEK
TRANSCEND THE CONVENTIONAL

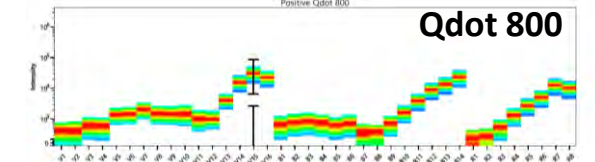
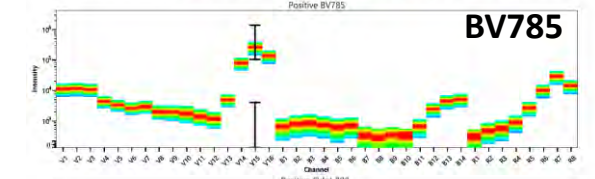
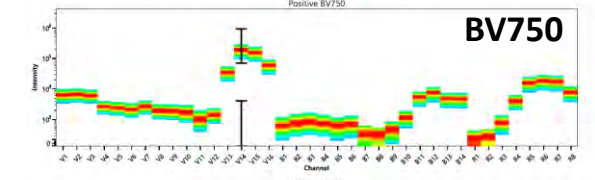
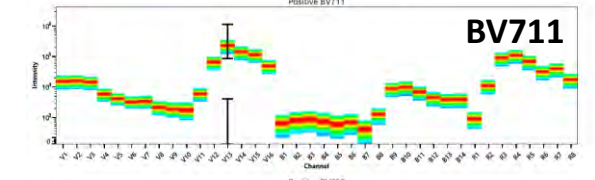
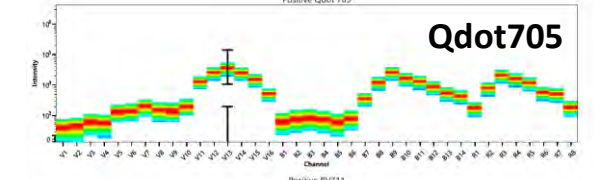
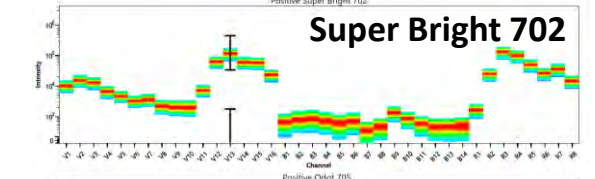
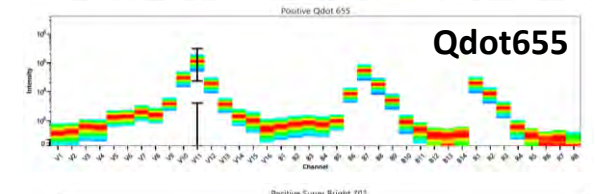
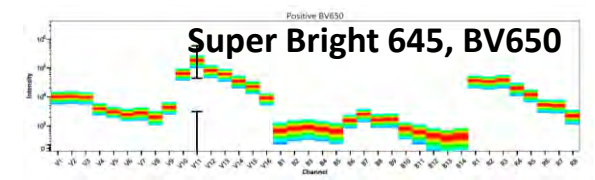
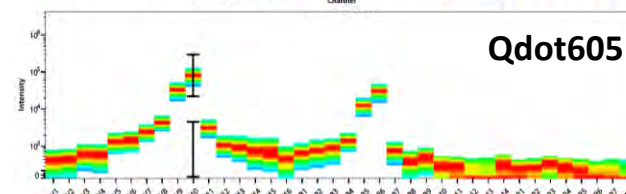
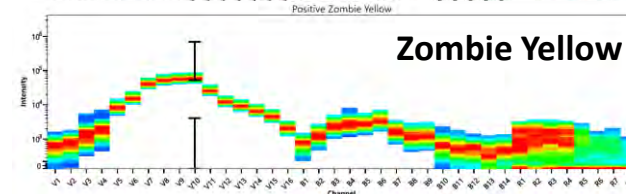
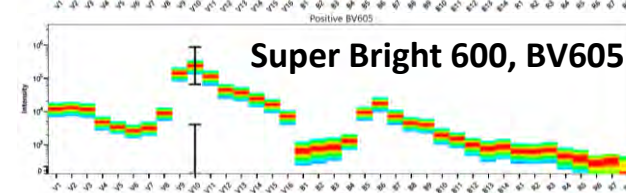
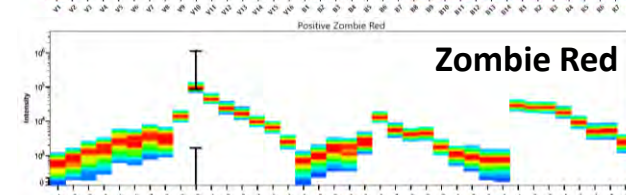
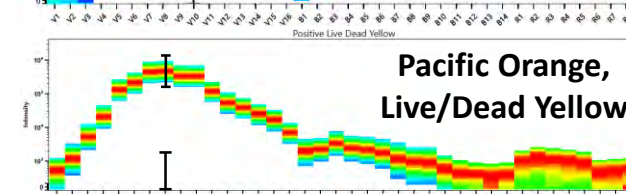
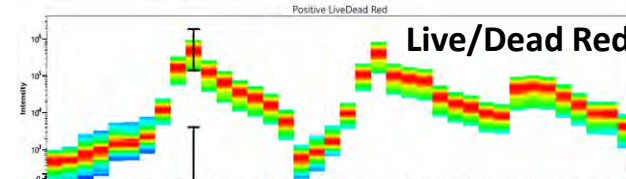
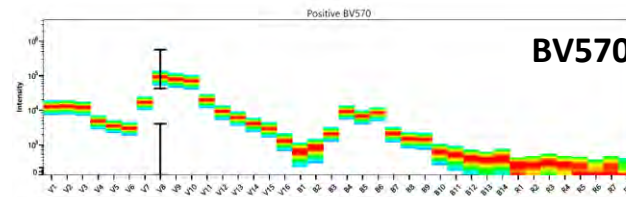
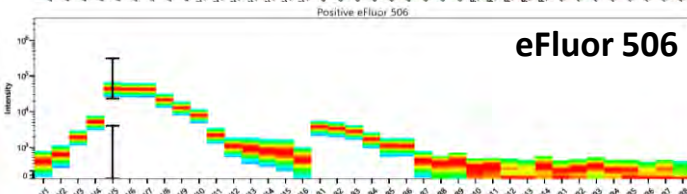
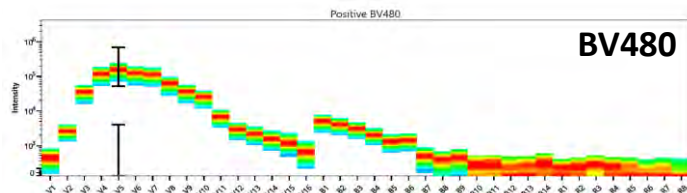
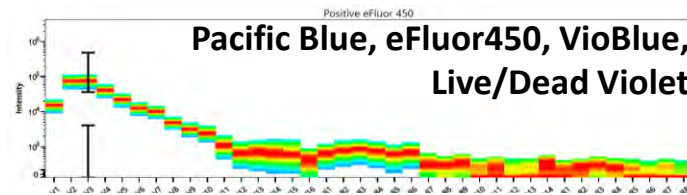
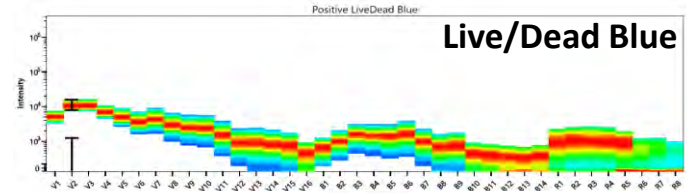
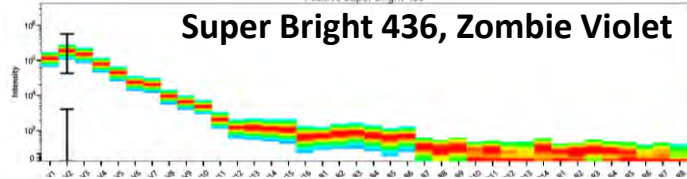
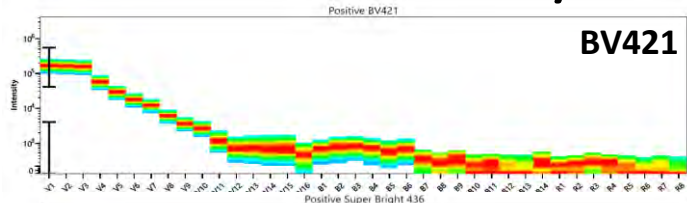
Cytek® Aurora Fluorochrome Selection Guidelines 3 Laser 16V-14B-8R

Stain Index Ranking - 59 Dyes

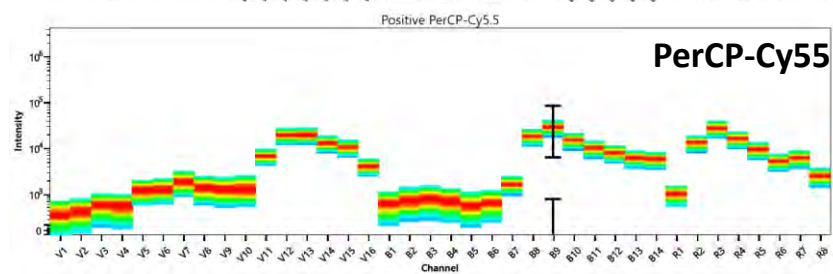
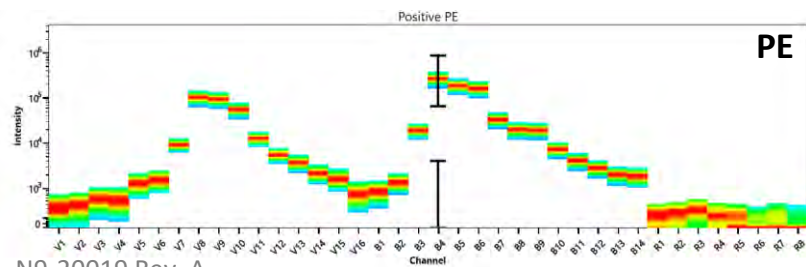
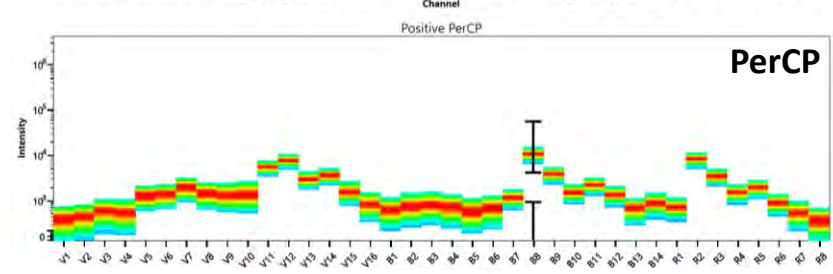
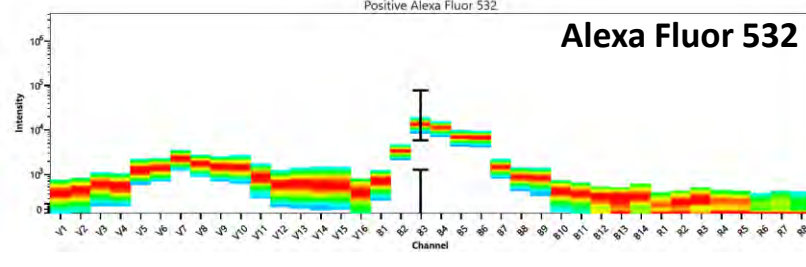
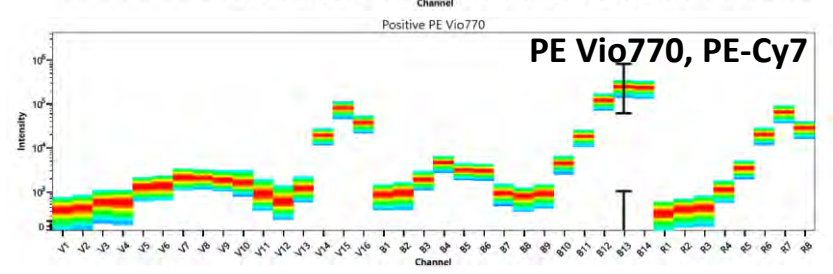
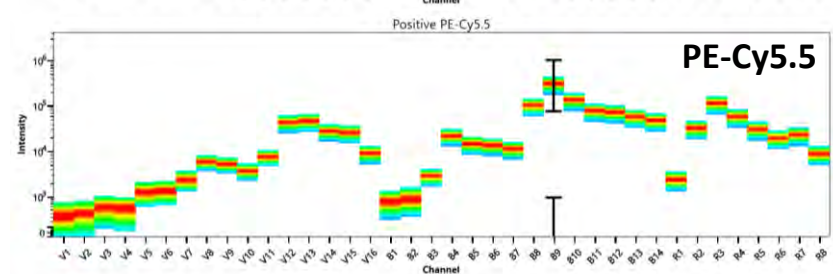
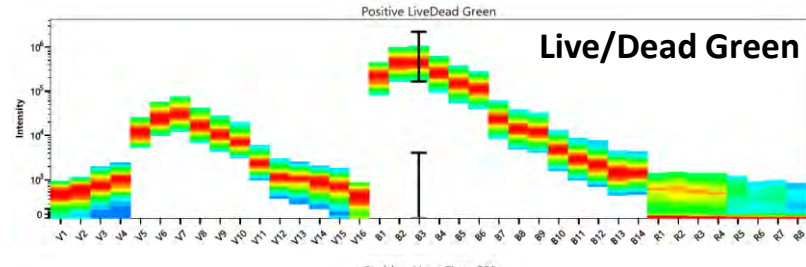
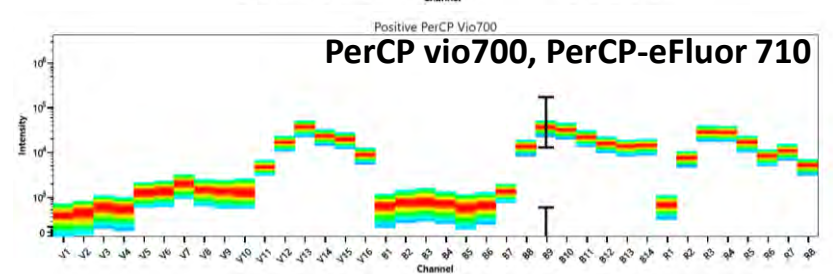
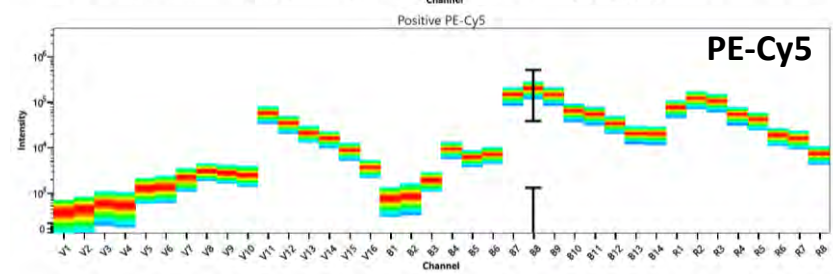
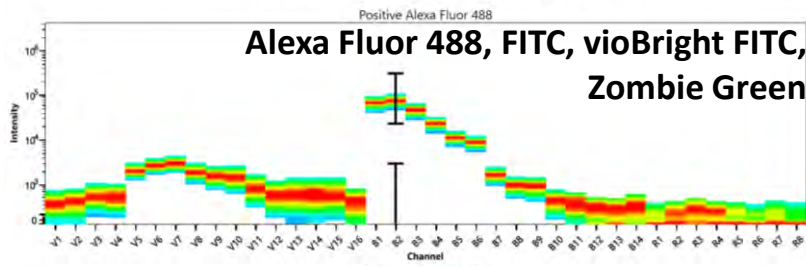
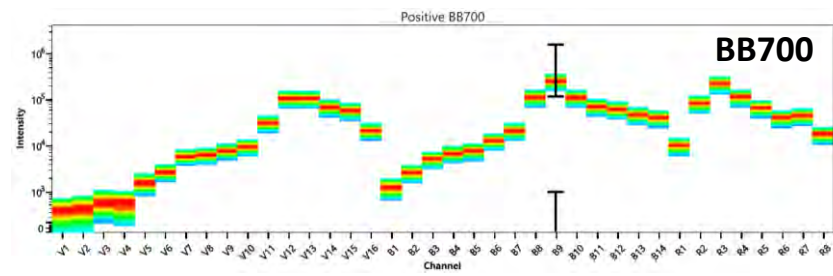
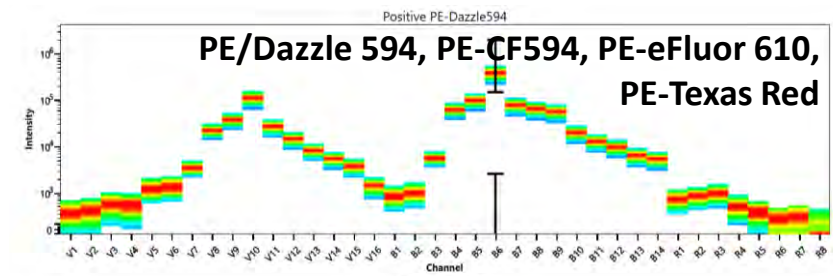
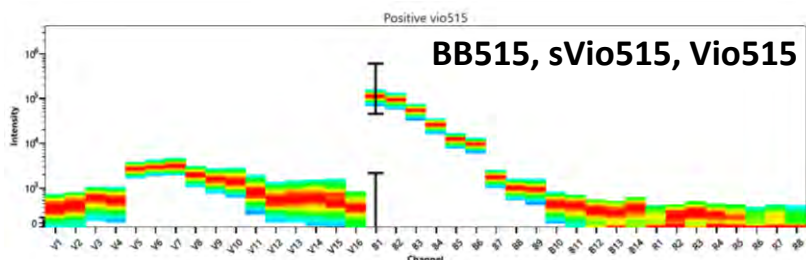




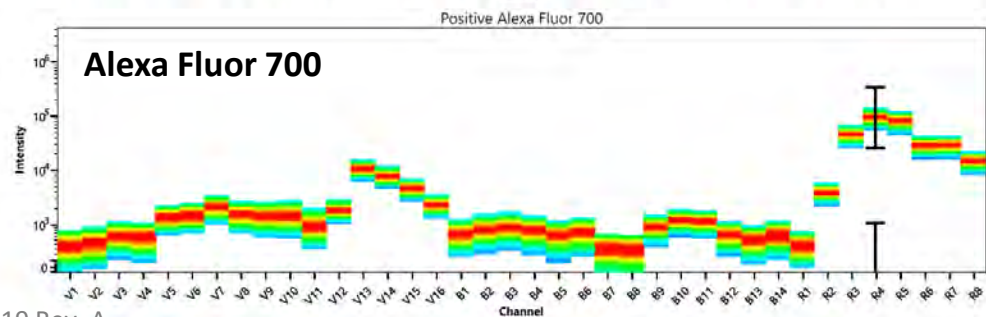
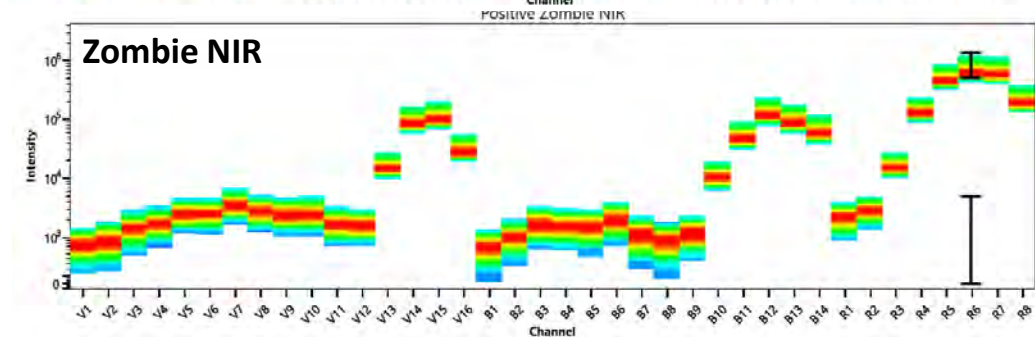
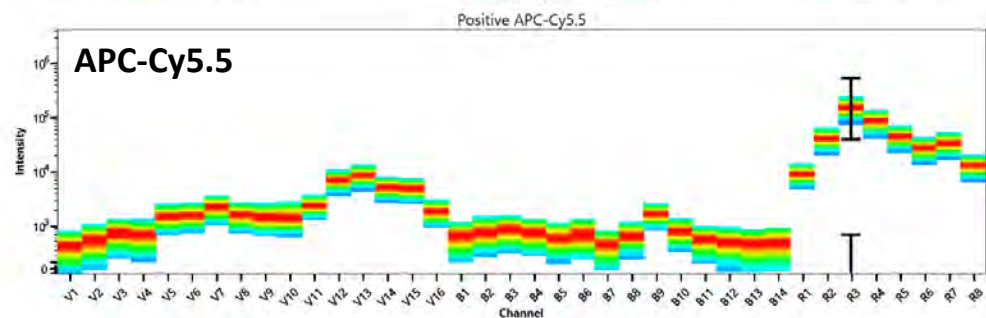
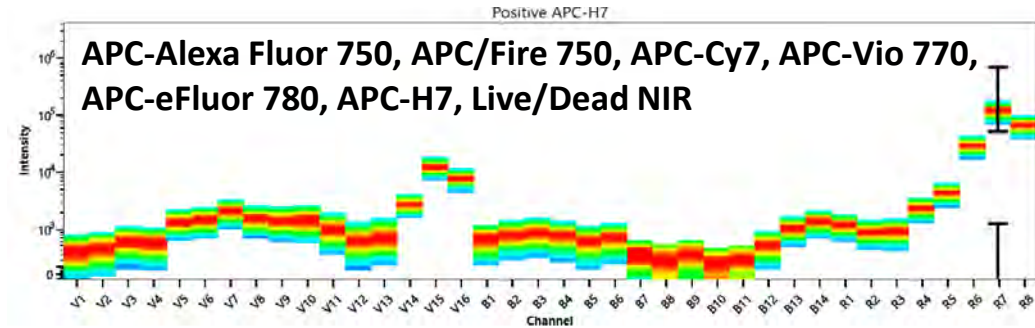
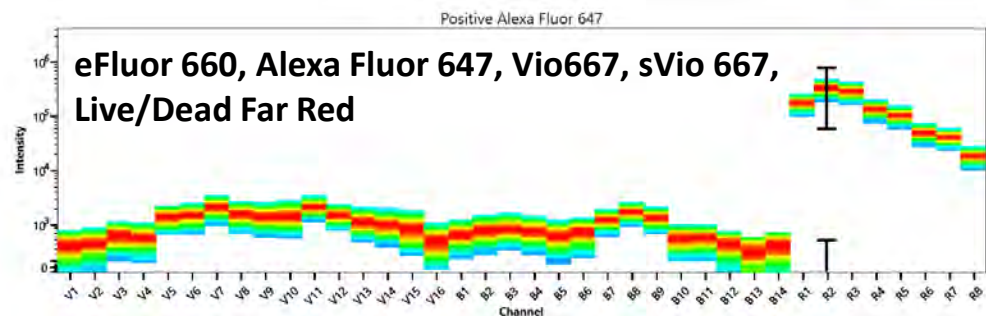
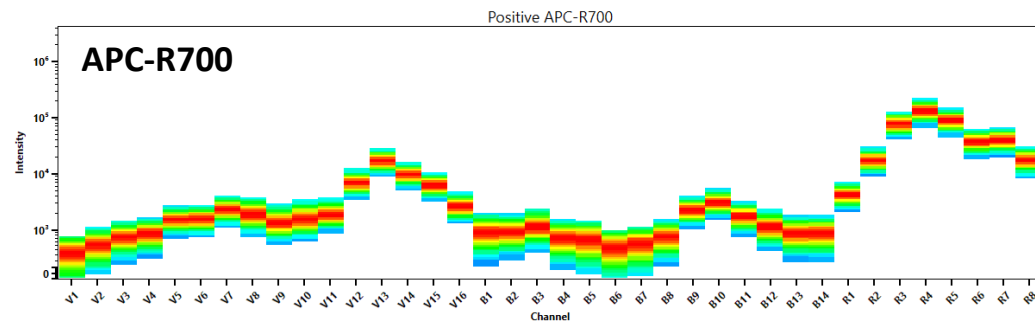
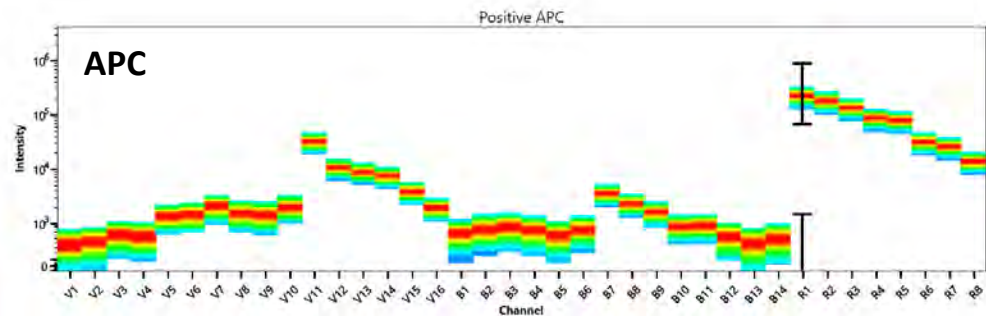
Violet Laser Excitable Dyes with Unique Signatures



Blue Laser Excitable Dyes with Unique Signatures



Red Laser Excitable Dyes with Unique Signatures



Fluorochrome Peak Channels

Violet Excited Fluors		Peak Channel	Blue Excited Fluors		Peak Channel	Red Excited Fluors		Peak Channel
BV421		V1	BB515, sVio515, Vio515		B1	APC		R1
Alexa Fluor 405, Super Bright 436, Zombie Violet, Live/Dead Blue		V2	Alexa Fluor 488, FITC, VioBright FITC, Zombie Green		B2	Alexa Fluor 647, Vio 667, sVio 667, Live/Dead Far Red, eFluor 660		R2
eFluor 450, VioBlue, Pacific Blue, Live/Dead Violet		V3	Alexa Fluor 532, Live/Dead Green		B3			
BV480		V4	PE		B4	APC-Cy5.5		R3
eFluor 506		V5	PE/Dazzle 594, PE-CF594, PE-eFluor 610, PE-Texas Red		B6	Alexa Fluor 700, APC-R700		R4
BV510, VioGreen, Zombie Aqua, Live/Dead Aqua		V7	PE-Cy5, PerCP		B8			
BV570, Pacific Orange, Live/Dead Yellow		V8	PE-Cy5.5, PerCP-Cy5.5, BB700		B9	APC-Alexa 750, APC/Fire 750, APC-Cy7, APC-Vio 770, APC-eFluor 780, APC-H7, Live/Dead NIR		R7
BV605, Super Bright 600, Qdot 605, Live/Dead Red, Zombie Yellow		V10	PerCP Vio700, PerCP-eFluor 710		B10			
BV650, Super Bright 645, Qdot 655		V11	PE Vio770, PE-Cy7		B13			
BV711, Super Bright 702, Qdot 705		V13						
BV750		V14						
BV785, BV786, Qdot 800		V15						

Example of 24 Dyes that Can Be Used in Combination (CAREFUL PANEL DESIGN IS NEEDED)

Fluorophore	Fluorophore	Fluorophore
BB515	APC	BV421
Alexa Fluor 488 or FITC	Alexa Fluor 647	Super Bright 436
Alexa Fluor 532	APC-R700 or AF700	eFluor 450 or equivalent
PE	APC/Fire 750 or equivalent	BV480
PE/Dazzle 594 or equivalent		BV510
PE-Cy5		BV570
PerCP-Cy5.5		BV605
PerCP-eFluor710		BV650
PE-Cy7		BV711
		BV750
		BV785

Spread Matrix for 24 Fluors that can be Used in Combination

	BV421	Super Bright 436 eFluor 450	BV480	BV510	BV570	BV605	BV650	BV711	BV750	BV785	BB515	Alexa Fluor 488	Alexa Fluor 532	PerCP-Cy5.5	PerCP-eFluor 710	PE	PE-Dazzle594	PE-Cy5	PE-Cy7	APC	Alexa Fluor 647	Alexa Fluor 700	APC-Fire 750	
BV421	Black	Red																						
Super Bright 436	Red	Black																						
eFluor 450			Black																					
BV480				Black																				
BV510					Black																			
BV570						Black																		
BV605							Black																	
BV650								Black																
BV711									Black	Red														
BV750										Black	Red													
BV785											Black	Red												
BB515												Black	Red											
Alexa Fluor 488													Black	Red										
Alexa Fluor 532														Black	Red									
PerCP-Cy5.5															Black	Red								
PerCP-eFluor 710																Black	Red							
PE																	Black	Red						
PE-Dazzle594																		Black	Red					
PE-Cy5																			Black	Red				
PE-Cy7																				Black	Red			
APC																					Black	Red		
Alexa Fluor 647																						Black	Red	
Alexa Fluor 700																							Black	Red
APC-Fire 750																								Black

To read this table: fluor in the row impacts the one in the column. Red means the fluor in that row has significant spread into the dye in the column (for example PE into BV570). Areas in bright pink and red is where more attention to panel design is needed.